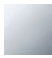

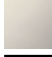





28 518 360



- spray head Ø 55mm
- ball-joint pivotable through 25° (in any direction)
- rain flow
- rosette Ø 55 mm
- 1/2" connection
- max. flow 5 l/min
- This product can help a building meet the requirements of Green Building Rating Systems, e.g. LEED®, BREEAM®, DGNB

	Chrome	28 518 360-00
	Brushed Platinum	28 518 360-06
	Platinum	28 518 360-08
	Durabrace (23kt Gold)	28 518 360-09
	Brushed Durabrace (23kt Gold)	28 518 360-28
	Brushed Dark Platinum	28 518 360-99

Recommended miscellaneous



- Concealed wall elbow -** 35 085 970 90
- max. recess depth 163 mm
 - min. recess depth 90 mm

28 518 360

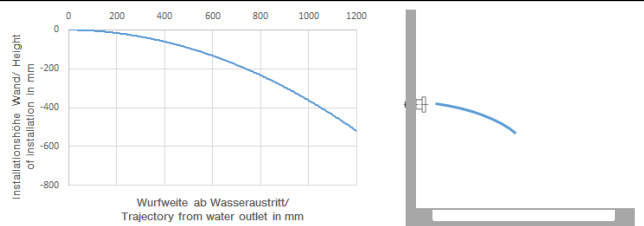
mm [inches]



Flow rate chart



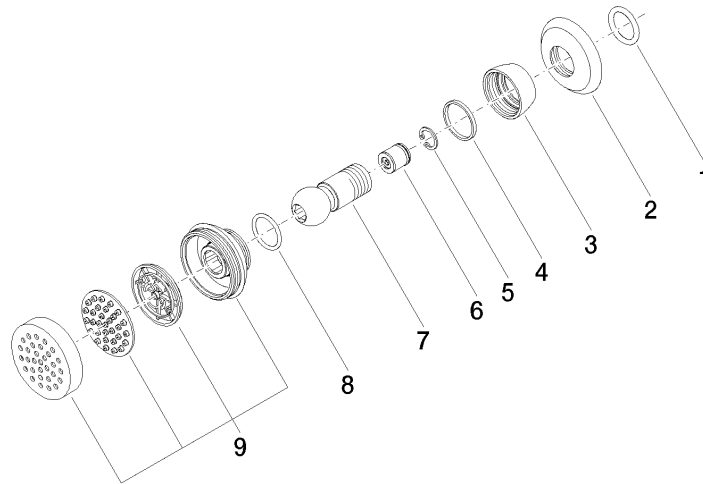
Trajectory diagram



Certificates

LGA_38651.

28 518 360



Spare parts list

No.	Item Number	Name	Quantity used	Delivery time
1	90 14 10 026 00 90	seal	1	2
2	09 27 35 003-00	rosette	1	10
3	09 23 30 027-00	nut	1	10
4	09 14 15 010 90	ring	1	2
5	09 16 01 014 90	ring	1	2
6	09 23 01 048 90	back-flow preventer	1	2
7	09 21 40 016-00	connection	1	10
8	09 14 10 015 90	seal	1	2
9	90 12 05 028 00-00	casing (completely)	1	10